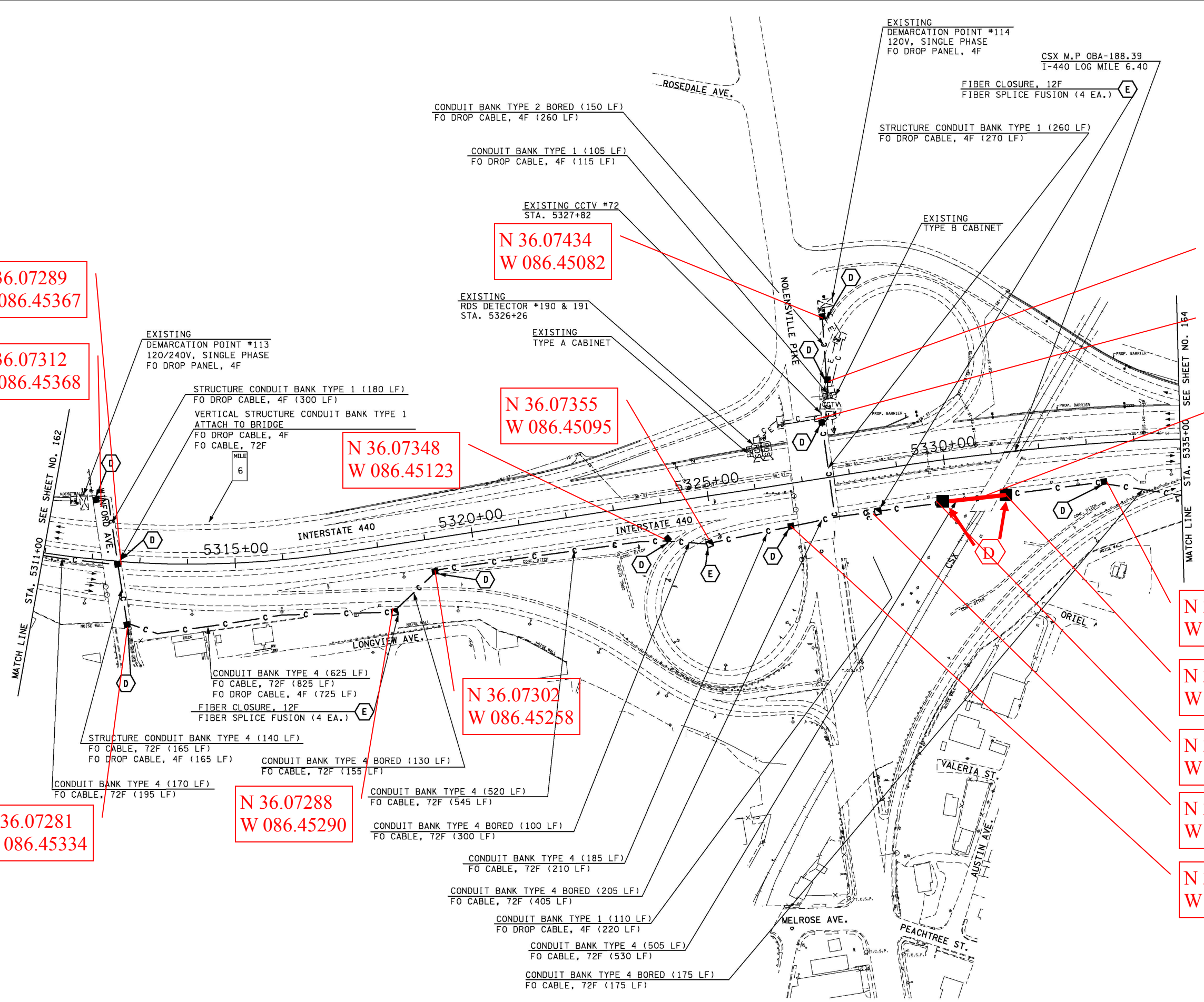
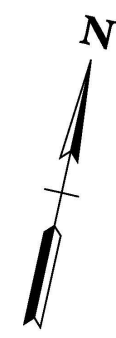


TENNESSEE D.O.T.  
DESIGN DIVISION  
FILE NO.

TYPE	YEAR	PROJECT NO.	SHEET NO.
CONST.	2007	CM-098-3(14)	163
As built	2010		



N 36.07289  
W 086.45367

N 36.07312  
W 086.45368

N 36.07434  
W 086.45082

N 36.07401  
W 086.45068

N 36.07392  
W 086.45065

N 36.07348  
W 086.45123

N 36.07355  
W 086.45095

Bore

N 36.07302  
W 086.45258

N 36.07400  
W 086.44941

N 36.07390  
W 086.44990

N 36.07386  
W 086.45002

N 36.07281  
W 086.45334

N 36.07288  
W 086.45290

N 36.07370  
W 086.45051

N 36.07362  
W 086.45079

STATE OF TENNESSEE  
DEPARTMENT OF TRANSPORTATION

ITS LAYOUT  
I-440  
STA. 5311+00 TO  
STA. 5335+00  
SCALE: 1"=100'